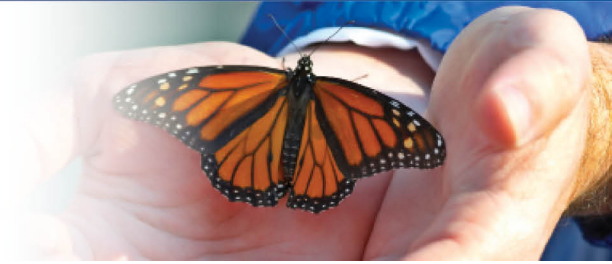


ASPENPOINTE

SINCE 1875...



Rural

The No. 1 issue facing the behavioral health of our rural communities is access to service.

The No. 1 issue facing the behavioral health of our rural communities is access to service. A 2008 federal report stated that more than half of U.S. counties had no mental health provider.¹

Effective outreach to these communities is essential and accomplished by partnering with rural schools to open clinics with regular visits from licensed therapists.

A multi-agency study suggests that "outreach services must work within the context of their communities."² It is not enough to simply reach out to rural communities. We must tailor our services to meet the unique needs of each community.

1. 2008 report by the National Advisory Committee on Rural Health and Human Services.

2. Mental Health Outreach: Promising Practices in Rural Areas, 2001. National Association for Rural Mental Health



Since 1875, ASPENPOINTE has empowered clients, enriched lives and embraced purpose through individual and family services in mental health, substance abuse, employment & career development, education, housing, jail diversion & reintegration, telephonic wellness, and provider network services.

(719) 572-6100 | (800) 285-1204 | WWW.ASPENPOINTE.ORG