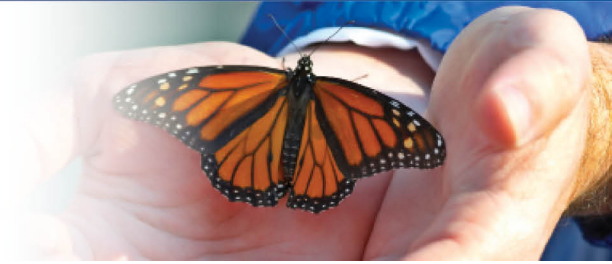


ASPENPOINTE

SINCE 1875...



Published Articles

Published works about the impacts of, and solutions for, depression in the work place.

Absenteeism and Productivity at Work: Losses with Depression

Kessler, R.C., Akiskal H.S., Ames

, M et al. Prevalence and effects of mood disorders on work performance in a nationally representative sample of U.S. Workers. American Journal of Psychiatry 2006; 163:1561-1568.

Steward, W.F., Ricci, J.A., Chee, E. et al. Cost of lost productive work time among US workers with depression. JAMA 2003; 289:3135-3144.

Depression Programs that Improve Absenteeism and Productivity at Work

Rost, K.M., Smith, J.L., and Dickinson

, M. The effect of improving primary care depression management on employee absenteeism and productivity: A randomized trial. Medical Care 2004; 42, 1202 - 1210.

Lo Sasso, A.T., Rost, K.M., Beck A. Modeling the impact of enhanced depression treatment on workplace functioning and cost-benefit approach. Medical Care, 2006; 44, 352-358.



Since 1875, ASPENPOINTE has empowered clients, enriched lives and embraced purpose through individual and family services in mental health, substance abuse, employment & career development, education, housing, jail diversion & reintegration, telephonic wellness, and provider network services.

(719) 572-6100 | (800) 285-1204 | WWW.ASPENPOINTE.ORG