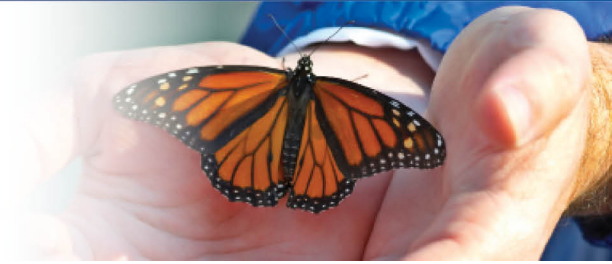


ASPENPOINTE

SINCE 1875...



Older Adults

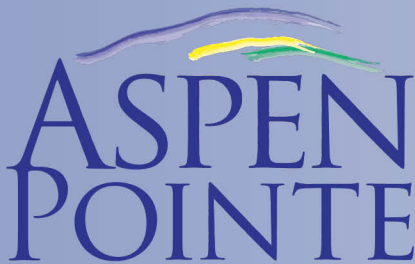
Baby boomers are quickly approaching age 65, and the United States Census Bureau estimates that by 2030, older adults will account for 20 percent of the population.

Baby boomers are quickly approaching age 65, and the United States Census Bureau estimates that by 2030, older adults will account for 20 percent of the population.

This rapidly growing demographic requires our utmost attention as nearly 20 percent of older adults suffer from mental illness. Older adults also have a higher rate of suicide than any other age group, with those 85 and older ending their lives at nearly twice the rate of the national average.¹

Because of stigma, denial and lack of resources, many of those suffering from a late-life disorder go untreated, making coordination among mental health professionals and aging organizations crucial. Detection and early intervention are essential to protecting our older adults.

1. American Association for Geriatric Psychiatry



Since 1875, ASPENPOINTE has empowered clients, enriched lives and embraced purpose through individual and family services in mental health, substance abuse, employment & career development, education, housing, jail diversion & reintegration, telephonic wellness, and provider network services.

(719) 572-6100 | (800) 285-1204 | WWW.ASPENPOINTE.ORG