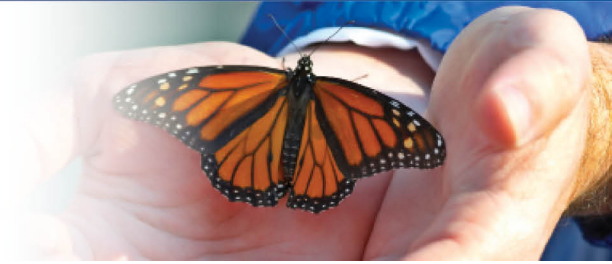


ASPENPOINTE

SINCE 1875...



Introduction to Construction/Carpentry

Provides training to accommodate all types of learners to gain competitive skills in carpentry and/or construction.

Overview:

Introduction to Construction/Carpentry takes a basic look at the tools and skills needed in the construction or carpentry fields. Participants are instructed in both manual and power tools, as well as, how to read blueprints, use measurement tools, estimate material costs and a final project. The final project includes all of the previously identified skills to bring together instruction and practical experience.

Insurance(s) Accepted:

Third party

Hours:

M-F 8-5pm by appointment

Support Line: Call (719) 572-6100



Since 1875, ASPENPOINTE has empowered clients, enriched lives and embraced purpose through individual and family services in mental health, substance abuse, employment & career development, education, housing, jail diversion & reintegration, telephonic wellness, and provider network services.

(719) 572-6100 | (800) 285-1204 | WWW.ASPENPOINTE.ORG