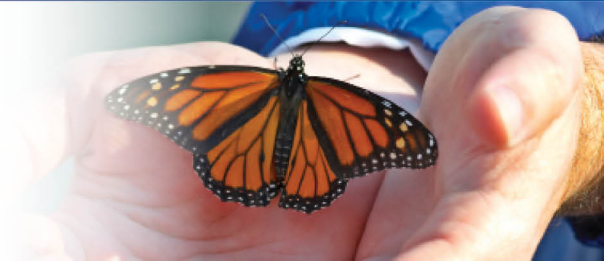


ASPENPOINTE

SINCE 1875...



Education Tutoring

Individual one-on-one assessments and support are used to help build educational foundations to ensure success and are provided by a Licensed Colorado Department of Education Teacher.

Overview:

Individuals may need additional tutoring to successfully achieve their educational aspirations.

Education tutoring is based on academic levels of success and provides individuals with additional academic supports. Students who struggle with reading and writing are tutored using remediation techniques to give them a balance in all areas of academics. Individual one-on-one assessments and support are used to help build educational foundations to ensure success and are provided by a Licensed Colorado Department of Education Teacher.

Eligibility Criteria:

Available to anyone

Insurance(s) Accepted:

Medicaid, Third-Party, DYC, DVR, VA, Probation, PPWFC, School Districts, Jail Diversion, Self Pay

Hours:

Monday-Friday 8 a.m. to 5 p.m. by appointment

Support Line: Call (719) 572-6100



Since 1875, ASPENPOINTE has empowered clients, enriched lives and embraced purpose through individual and family services in mental health, substance abuse, employment & career development, education, housing, jail diversion & reintegration, telephonic wellness, and provider network services.

(719) 572-6100 | (800) 285-1204 | WWW.ASPENPOINTE.ORG