



## Community-Based Care & Partnerships

AspenPointe partners with multiple organizations in Colorado Springs to provide the best, and most convenient care for clients.

**Community Partnership for Child Development** is the El Paso County head start program.

**Therapeutic Preschool Program** is a Community Partnership for Child Development (CPCD) program that hosts an AspenPointe child and family therapist and advocate. The team works to support the behavioral healthcare needs of the enrolled children. The goal is to address disruptive behaviors and work to develop healthy choices, self-regulation and parent support to successfully transition the children to traditional preschool and kindergarten options.

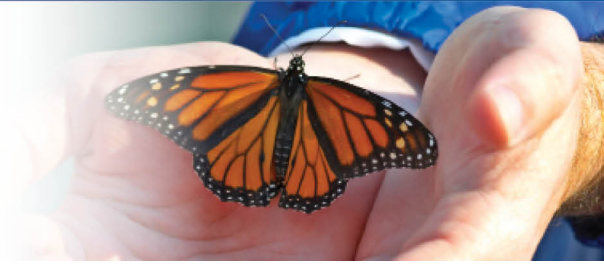
---

**Department of Human Services** is the county support agency that works to support people in their application for state benefits, access to child welfare supports, facilitate foster/adopt programs, and linkages to other community support.

**Integration Project** is a partnership between AspenPointe and Department of Human Services to proactively address the needs of families and children in need due to child welfare concerns. The program aligns the resources of the two systems to address the needs of families in crisis in a proactive manner of care.

**Temporary Assistance for Needy Families Partnership** AspenPointe co-locates a therapist at Department of Human Services to meet the needs of families receiving Temporary Assistance for Needy Families (TANF) benefits. The therapist assists with navigating systems of care to meet their needs and link clients to therapeutic support including assessments, therapy, case management and or advocacy.

---



**Department of Youth Corrections** works to protect, restore, and improve public safety through a continuum of services and programs that effectively supervises juvenile offenders, promotes offender accountability to victims and communities, and builds skills and competencies of youth to become responsible citizens.

**Spring Creek Co-location Partnership** is a partnership of Department of Youth Corrections and AspenPointe where a co-located therapist delivers therapeutic services to detained or committed youth at Spring Creek and works to transition the children and youth to community-based supports once released.

---

### El Paso County Court

**Truancy Court Co-location Program** is a partnership between AspenPointe Child and Family Services, El Paso County Court and Department of Human Services. The program includes co-locating a clinical staff person from AspenPointe at the court to expedite and triage children, youth and families to needed therapeutic care and intervention.

---

### School District 2

**Entrada Center** is a school-based health clinic and collaboration between Harrison School District 2 ? Carmel Middle School and AspenPointe. The goal is to increase access to medical and mental health services, decrease the number of children and families who avoid healthcare issues due to funding or access challenges; increase the overall health of local community members, increase attendance and retention at the school level.

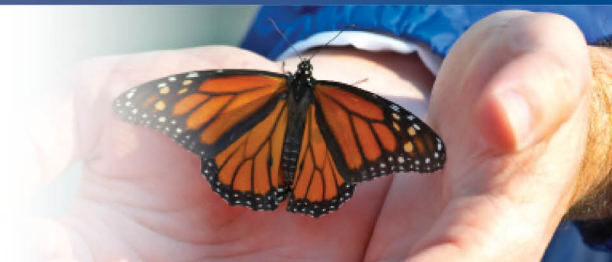
---

### School District 11

**Incredible Years Partnership** is the partnership between School District 11 Elementary Schools and AspenPointe to deliver Incredible Years Parent Group and Dinosaur School a prevention model that works to develop attachment between child and caregiver, and develop pro-social skills and character

ASPENPOINTE

SINCE 1875...



building through play.

**Community Prep Partnership** is the partnership between the District 11 Charter School ? Community Prep and AspenPointe. The goal is increase access to mental health services for youth in a location that meets the cultural and transportation needs of the students.



Since 1875, ASPENPOINTE has empowered clients, enriched lives and embraced purpose through individual and family services in mental health, substance abuse, employment & career development, education, housing, jail diversion & reintegration, telephonic wellness, and provider network services.

(719) 572-6100 | (800) 285-1204 | [WWW.ASPENPOINTE.ORG](http://WWW.ASPENPOINTE.ORG)