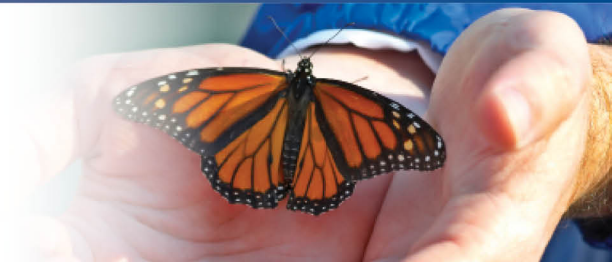


ASPENPOINTE

SINCE 1875...



## Clinical Guidelines

[Abel Screen](#)

[Antabuse Monitoring](#)

[Assessment for all Levels of Care-SA](#)

[Attachment Assessment](#)

[Case Management for MH and SA](#)

[Child Protection Service](#)

[Day Treatment](#)

[Developmental Disabilities Assessment](#)

[Domestic Violence Offender Eval](#)

[Domestic Violence Assessment Offender](#)

[Domestic Violence Assessment Victim](#)

[Family Preservation](#)

[Functional Family Therapy](#)

[Global Assessments](#)

[Ind/Family/Group Domestic Violence Treatment](#)

[Intellectual Testing](#)

[Intensive Outpatient Services \(IOP\)](#)

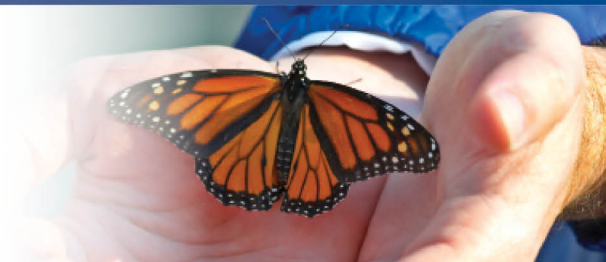


Since 1875, ASPENPOINTE has empowered clients, enriched lives and embraced purpose through individual and family services in mental health, substance abuse, employment & career development, education, housing, jail diversion & reintegration, telephonic wellness, and provider network services.

(719) 572-6100 | (800) 285-1204 | [WWW.ASPENPOINTE.ORG](http://WWW.ASPENPOINTE.ORG)

ASPENPOINTE

SINCE 1875...



[Intensive Therapeutic Process/Group](#)

[Intensive Therapy-Family](#)

[Intensive Therapy-Individual](#)

[Interactional Assessment](#)

[Immediate Placement Prevention Response Team \(IPPRT\)](#)

[Life Skills Homemaker](#)

[Life Skills Parenting](#)

[Matrix Model](#)

[Medication Management](#)

[Mental Health Needs Assessment](#)

[Multisystemic Therapy \(MST\)](#)

[MST for Problem Sexual Behaviors](#)

[Neuropsychological Eval](#)

[Nurturing Parenting](#)

[Outpatient Services ASAM Level 1](#)

[Outpatient Services for Co-occurring Disorders](#)

[Psychiatric \(Medication\) Eval](#)

[Psychoeducational Group](#)

[Psychological Evaluation](#)

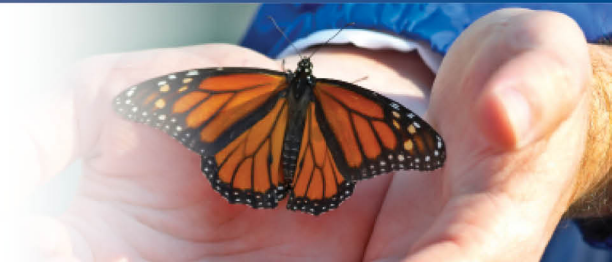


Since 1875, ASPENPOINTE has empowered clients, enriched lives and embraced purpose through individual and family services in mental health, substance abuse, employment & career development, education, housing, jail diversion & reintegration, telephonic wellness, and provider network services.

(719) 572-6100 | (800) 285-1204 | [WWW.ASPENPOINTE.ORG](http://WWW.ASPENPOINTE.ORG)

ASPENPOINTE

SINCE 1875...



[Psychosocial Assessment](#)

[Relinquishment Counseling](#)

[Residential Inpatient Treatment Services](#)

[Sex Abuse Treatment-Plethysmograph](#)

[Sex Abuse Treatment-Polygraph](#)

[Sex Abuse Victim-Offender Treatment](#)

[Sex Offender Evaluation-Adult Criminal Charges](#)

[Sex Offender Evaluation-Adult Non Criminal](#)

[Sex Offender Evaluation-Juvenile Criminal Charges](#)

[Sex Offender Evaluation-Juvenile Non-Criminal](#)

[Sex Abuse Intervention](#)

[Substance Abuse Lab Screens](#)

[Therapeutic Process/Group](#)

[Therapy-Family](#)

[Therapy-Individual](#)

[Trauma Assessment](#)

Since 1875, ASPENPOINTE has empowered clients, enriched lives and embraced purpose through individual and family services in mental health, substance abuse, employment & career development, education, housing, jail diversion & reintegration, telephonic wellness, and provider network services.

(719) 572-6100 | (800) 285-1204 | [WWW.ASPENPOINTE.ORG](http://WWW.ASPENPOINTE.ORG)

**ASPEN  
POINTE**

*Empowering Clients. Enriching Lives. Embracing Purpose.*