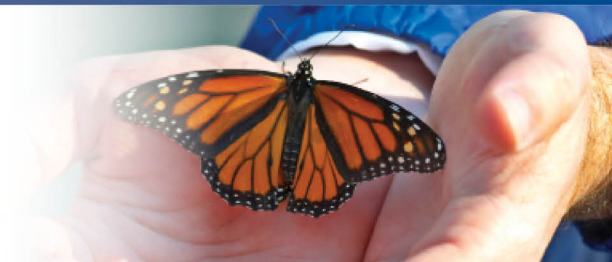


ASPENPOINTE

SINCE 1875...



Clients

Mental Illness does not recognize race, age, sex, ability or class. Clients in need of behavioral health services span all demographics. An integrated approach to mental health needs to look at the individual needs of the clients.



Since 1875, ASPENPOINTE has empowered clients, enriched lives and embraced purpose through individual and family services in mental health, substance abuse, employment & career development, education, housing, jail diversion & reintegration, telephonic wellness, and provider network services.

(719) 572-6100 | (800) 285-1204 | WWW.ASPENPOINTE.ORG