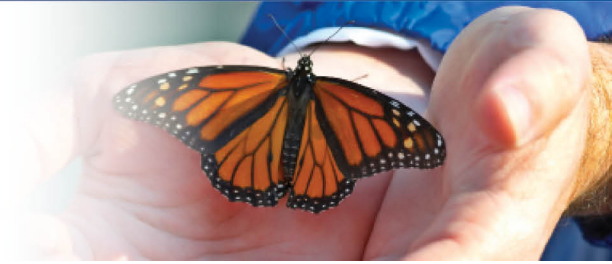


ASPENPOINTE

SINCE 1875...



Board of Directors

AspenPointe enjoys the wisdom, guidance and perspective of its Board of Directors.

AspenPointe enjoys the wisdom, guidance and perspective of its Board of Directors.

These dedicated volunteers support the organization with leadership and advocacy. In addition to serving on the board, all serve on many of our committees - including strategic planning, finance, compensation, and marketing and communications.

Bill Crouch, M.D., Chair

Richard Sullivan, Vice Chair

Camille Blakely, Secretary (serves on Behavioral Health Services Board, too)

Stacy Lutz Davidson, Treasurer

Carolena Steen, Ph.D., Immediate Past Chair

Sue Autry

Larry Dewell, M.D.

Charles Emmer

Steve Everson

Donna Finicle (Behavioral Health Services Board)

Debbie Hartley (Behavioral Health Services Board)

Fletcher Howard

Sanford (Pete) Lee (Behavioral Health Services Board)

John McCaa

Phyllis McCoy

Laura McGuire

Connie Rickard (Behavioral Health Services Board)

Debbie Sagen

Cathy Skiles

John Stevens, D.D.

Pete Vujcich

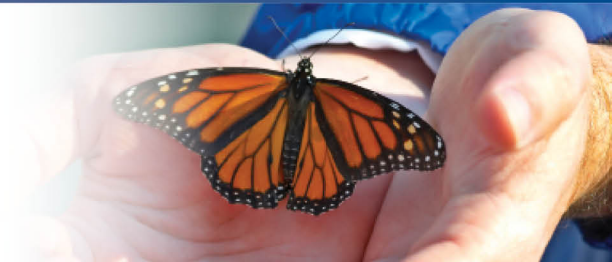


Since 1875, ASPENPOINTE has empowered clients, enriched lives and embraced purpose through individual and family services in mental health, substance abuse, employment & career development, education, housing, jail diversion & reintegration, telephonic wellness, and provider network services.

(719) 572-6100 | (800) 285-1204 | WWW.ASPENPOINTE.ORG

ASPENPOINTE

SINCE 1875...



Gary Whitlock



Since 1875, ASPENPOINTE has empowered clients, enriched lives and embraced purpose through individual and family services in mental health, substance abuse, employment & career development, education, housing, jail diversion & reintegration, telephonic wellness, and provider network services.

(719) 572-6100 | (800) 285-1204 | WWW.ASPENPOINTE.ORG